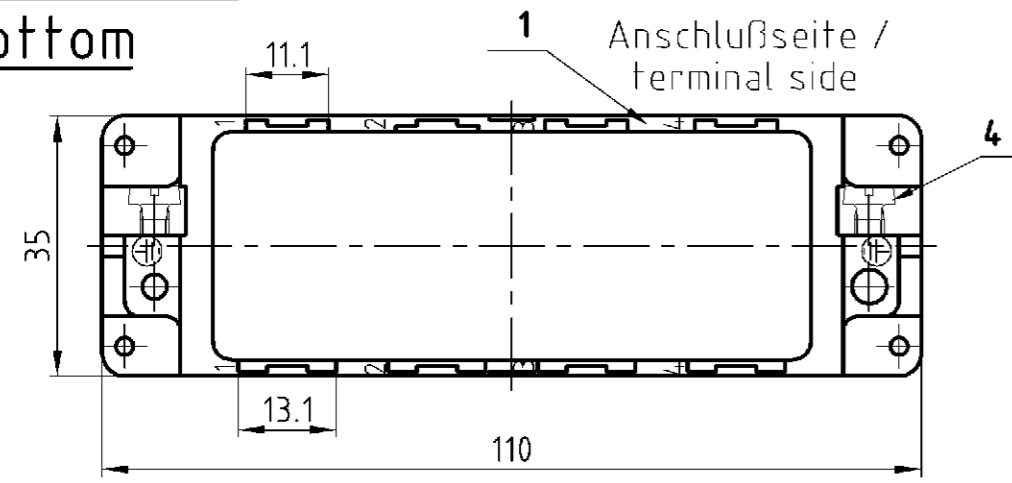
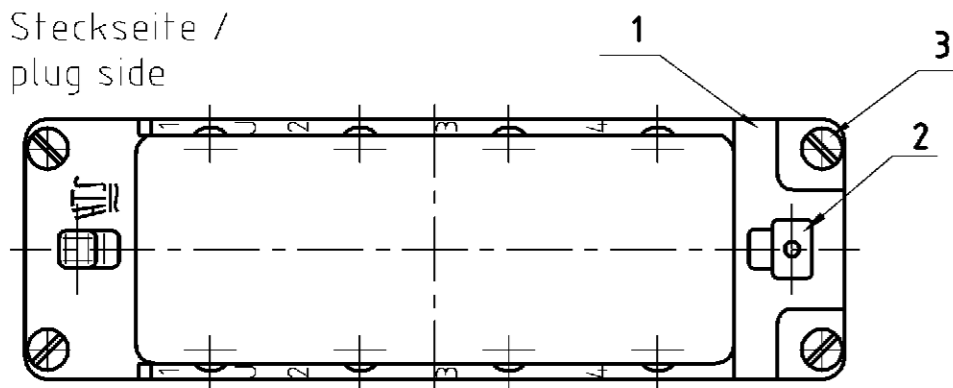


LOC	DIST	REVISIONS			DATE	DWN	APVD
AI	-	P	LTR	ÄNDERUNGEN			
PROJEKT NR.:	B2	DESCRIPTION					
B 91 04 65	ECR-05-006046	BESCHREIBUNG					

Unterteil /
bottom

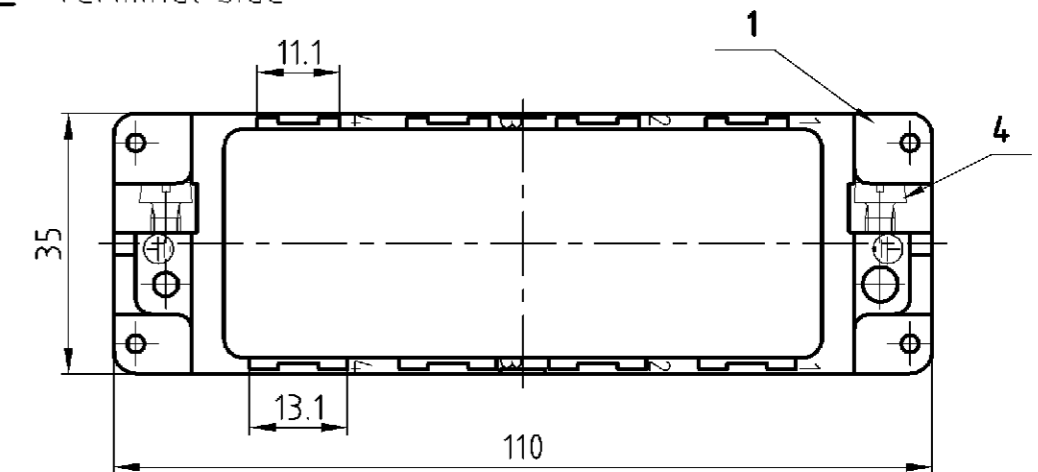


Steckseite /
plug side

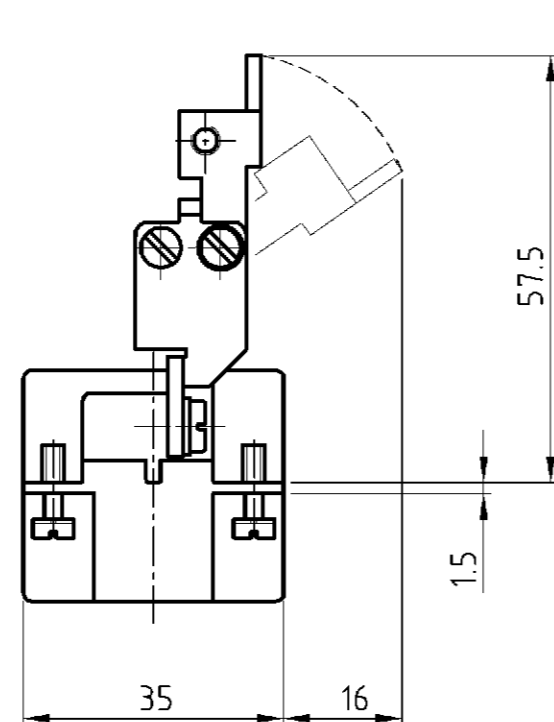
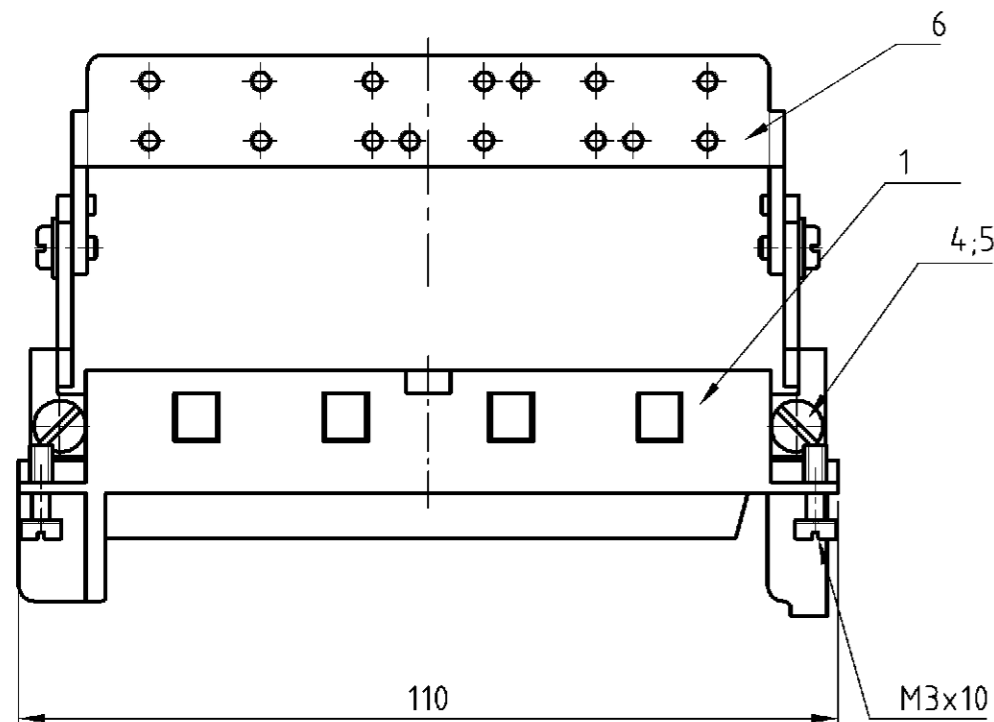
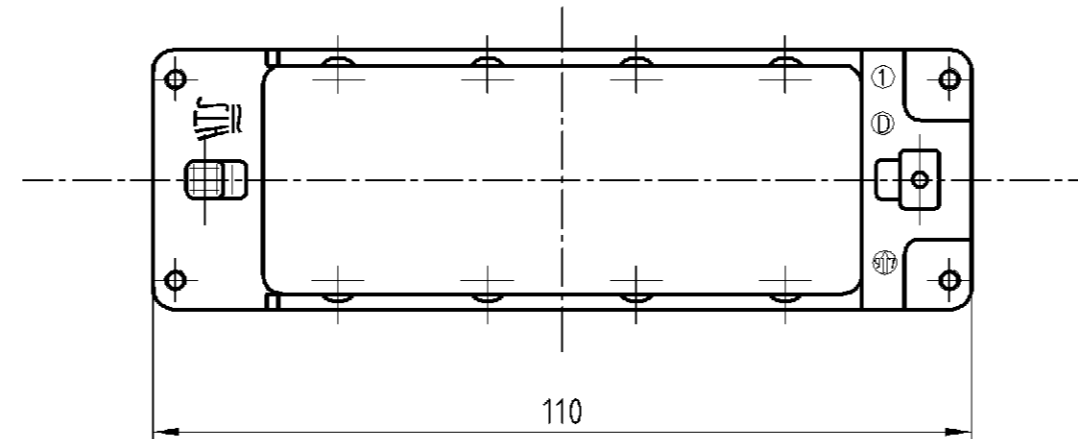
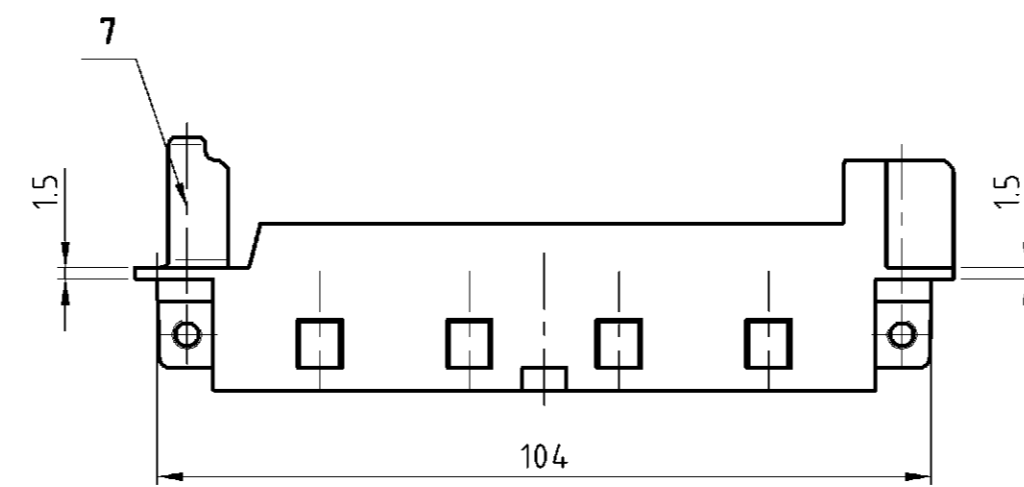
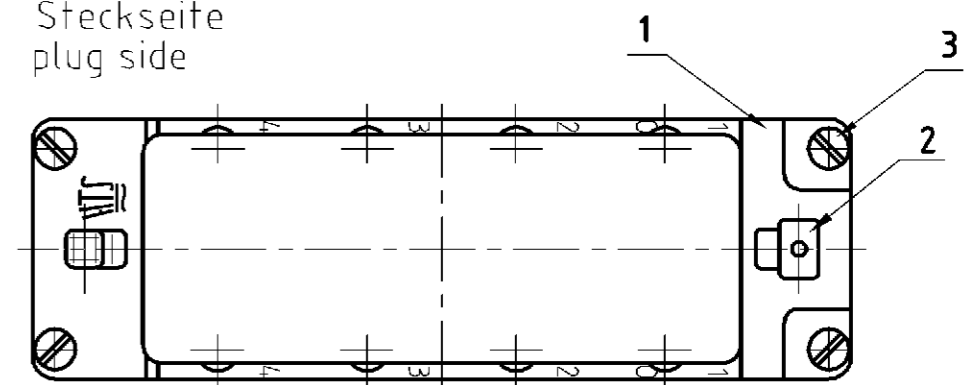


Oberteil /
upper part

Anschlußseite
terminal side



Steckseite
plug side



						1	2			
		1				Modulrahmen Oberteil module frame upper part	Zink-Leg./ zinc alloy	Verzinkt/ tin plated	7	Sonder für Griffblech/ special for grip
		1	1			Schirmbügel schwenkbar/ screen termination roofing	Stahl/steel	Verzinkt/ tin plated	6	
		2	2			Federring/ spring lock washer	Stahl/steel	Verzinkt/ tin plated	5	DIN 128 - A4
2	2	2	2	2	2	Zylinderschraube mit Schlitz/ cylinder screw with slit	Messing/brass	Vernickelt/ nickel plated	4	DIN EN ISO 1207
4	4	4	4	4	4	Befestigungsschraube/ fixing screw	Stahl/steel	Vernickelt/ nickel plated	3	M3x10
1	1	1	1	1	1	Erdkontaktfeder/ spring f. grounding cont.	Bronze/ bronze	Vernickelt/ nickel plated	2	
1	1		1	1	1	Modulrahmen/ module frame	Zink-Leg./ zinc alloy	Verzinkt/ tin plated	1	
0-70-60-50-40-30-20-1						DESCRIPTION / BENENNUNG	MATERIAL	SURFACE/COLOR	ITEM NO. Pos.	NOTES / BEMERKUNGEN
MDL2-GR-U-8-B5-8	MDL2-GR-O-8-B5-8	MDL2-GR-O-8/GB-B1-4	MDL2-GR-U-8/SB-B1-4	MDL2-GR-O-8/SB-B1-4	MDL2-GR-U-8-B1-4	MDL2-GR-O-8-B1-4	ORDERING TEXT/BESTELLTEXT	DWN wroblewski 06.10.2003	APVD Baum 06.10.2003	NAME AMP HTS Elektrotechnik 53819 Neunkirchen, Germany
DIMENSIONS: DIMENSIONEN: mm							TOLERANCES UNLESS OTHERWISE SPECIFIED ALLGEMEIN TOLERANZEN		PRODUCT SPEC PRODUKTSPEZ	
MATERIAL							FINISH / OBERFLÄCHE / FARBE		APPLICATION SPEC VERARBEITUNGSSPEZ	
0 PLC							0		WEIGHT GEWICHT	
1 PLC							1		SIZE GRÖßE	
2 PLC							2		CAGE CODE KLEINZEICHEN-NR.	
3 PLC							3		DRAWING NO. ZEICHNUNGS-NR.	
ANGLES / WINKEL							FINISH / OBERFLÄCHE / FARBE		RESTRICTED TO NUR FÜR	
1							2		CUSTOMER DRAWING /KUNDENZEICHNUNG	
							110g, 150g		MASSSTAB 1:1	
							A2		BLATT 1	
							00779		OF VON 1	
							1108780		REV B2	